

# Kindergarten DJIDI DJIDI

*(Jiddi-jiddi)  
Nyongar for Willy  
Wagtail*



**Beaumaris**  
Primary School



***At Beaumaris Primary school we are committed to providing for our students a strong, holistic foundation for relevant learning, living and thinking in the 21st Century.***

Beaumaris Primary School is an Independent Public School in Ocean Reef. Known nationally as a 'High Demand School', Beaumaris is strongly committed to implementing a thinking curriculum for our students as we move deeper into the 21<sup>st</sup> Century.

Beaumaris Primary School is a leading school in our system and it is our mission to build your child's creative thinking abilities through play based learning whilst maintaining a clear focus on the explicit teaching and learning of the Western Australian curriculum.

In addition to focusing on high performance and high care at a school level, Beaumaris is committed to implementing the Departmental priorities:

1. Success for all students
2. High quality teaching
3. Effective leadership
4. Strong governance and support.

We strive to create a learning culture, positive and nurturing in spirit, underpinned by core values that develop resiliency, celebrate diversity and recognise individual strength.

*At Beaumaris our students are the central focus of our school. Our goal is to provide the best possible conditions and support for them to do their best. This Year Level outline is shaped by the Kindergarten Curriculum Guidelines, the diverse needs of our students and our commitment to creating a culture of high expectations for our students.*





*Kindergarten is a vibrant, nurturing environment where children develop a love for learning.*

Kindergarten is the beginning of an exciting time in a child's life. We understand parents want the best for their child and will strive to give them a happy and balanced start to their educational journey. That is why Beumaris Primary School offers a high care-high performing, innovative and successful Kindergarten program that prepares children to confidently enter their Primary school years.

As a school, our goal is to harness children's natural inquisitiveness and

enthusiasm with a fundamental focus on the social and emotional development of our students.

Through playful learning our educators are able to respond to the wide range of children's learning and developmental needs.

Play is an essential ingredient for children's learning. We plan and support play experiences balanced with defined transitions and routines to promote increasing independence and expectations.

Children are given opportunities to extend their learning through rich open ended tasks. These tasks foster the development of the child's critical and creative thinking abilities. The children are viewed as decision makers and learning experiences are presented in ways that allow children to make choices and solve problems in multiple ways.

Each Wednesday the students will have a DOTT teacher to provide specialist areas for the students.

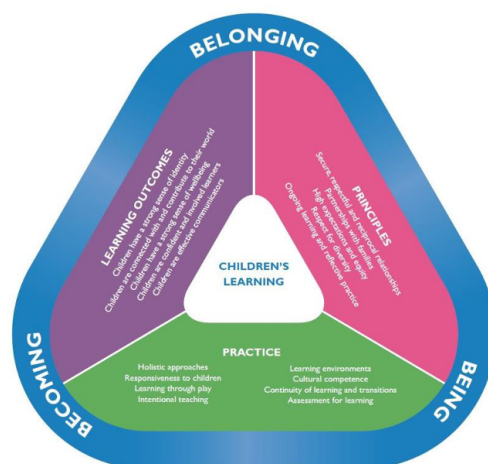
The individual curriculum components are presented through explicit teaching or integrated learning experiences.

## Our Early Years Statement

Beaumaris Primary School develops unique and confident life-long learners. Our dedicated educators deliver a unique blend of explicit instruction, authentic, relevant and meaningful learning experiences which support the development of the whole child. We value parent engagement and are committed to providing a quality holistic education that values each child's ability, cultural background and interests; providing opportunities for students to be the best they can be.

At Beaumaris Primary School we pride ourselves in providing a high quality, research based program that is developmentally appropriate for all children. We recognise the early years as being critically important, in terms of building valuable foundations for future learning and with high collaboration amongst our educators we ensure that we develop the 'whole child'.

The learning program in Kindergarten is centred around the principles and practices of The Early Years Learning Framework (EYLF) and our curriculum content is aligned with the Western Australian Kindergarten Guidelines. The National Quality Standards Framework (NQS) also underlies our planning to ensure we optimise all children's learning and development.



We believe that integrated teaching and learning approaches enables learning across multiple domains. Early Year's educators at Beaumaris Primary have been shaped and refined by creating a unique blend of explicit and play-based learning. We recognise that play is essential for early learning and is best supported by meaningful interactions with educators. Our programs are personalised and engage students in active learning (through hands-on, creative exploration and investigation) alongside formal instruction. This includes, explicit teaching and development of literacy and numeracy skills and a range of social and emotional life skills.



# Positive Behaviour

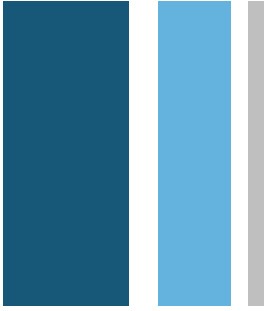
Positive Behaviour and Pastoral Care is a strong focus at Beaumaris. The students are encouraged to develop a good sense of self-worth and value other people's needs and contributions. The students can help contribute to the positive class and school tone through their actions, considerations and vocabulary.

Our Beaumaris Behaviour expectations are:

- 1. We do Our Best**
- 2. We are Responsible**
- 3. We are Respectful**
- 4. We are Safe**

These four cornerstones of our Positive Behaviour program support students to adopt increasing responsibility and accountability for learning and create a culture of *high performance* and *high care* across our school. We believe these behaviour expectations will make a difference to our students, not only now but in the future, as they venture out into the world ready to take a place in society as lifelong learners.





## Days and Times of Attendance

Children attend two days one week and three days the next, a total of 5 full days per fortnight. All groups attend from 8:15am to 2:40pm.

### SESSION TIMES

*Please refer to calendar*

#### A GROUPS

Week 1 - Mondays, Tuesdays, and alternate Wednesday.

Week 2 – Mondays, Tuesdays, and alternate Wednesday.

#### B GROUP

Week 1 - Thursdays, Fridays and alternate Wednesday)

## ***WHAT TO BRING ON THE FIRST DAY...***

All the items on the school requirements list is in the enrolment information pack. These should be placed in the labelled containers in front of your child's classroom on the first day of school.

In addition to these please ensure your child has:

- A spare set of clothes.
- A piece of pre-cut fruit in a small easy to open container with your child's name clearly labelled.
- A healthy snack i.e. muffin or yoghurt
- Water bottle with their name on it.
- A wide brimmed hat with their name on it.
- A labelled lunchbox

***Looking for inspiration for healthy lunches?***

***Try these websites:***

<https://healthylunchbox.com.au>

<https://www.crunchandsip.com.au>



## STUDENT INFORMATION

At Beaumaris PS it is our goal to work with parents to ensure that all children feel included, secure, and valued. It is our intention to work in partnership with parents to support each individual child. In Term 4 we will send a short survey to gain more information about your child. If you would like an interview with your child's teacher, please contact the school to arrange a meeting early in the following year.

During Term One we will also conduct a range of assessments with students to allow for developmentally appropriate play-based learning activities to be planned to meet the students' needs. We will contact you to arrange a parent interview to discuss any identified concerns. We also strongly urge you to contact us if you are in any way concerned about your child's development.

## NOTICE BOARD

Please check the class notice board every day as items of interest and details of the program will be regularly displayed. We also promote the use of Seesaw for each class and family registration details will be provided in Term 1. The school notifies parents/guardians using the COMPASS App.

## FRUIT FOR KINDY

An important part of our social skills program is the Kindy students enjoying a piece of fruit/vegetables with their peers for morning tea. Could we ask that you pre-cut the fruit/vegetables up and send to school in a small container clearly labelled with your child's name. **Children do not share fruit due to possible allergies in the classroom.** The children have access to their water bottles at all times throughout the day.



## RECESS

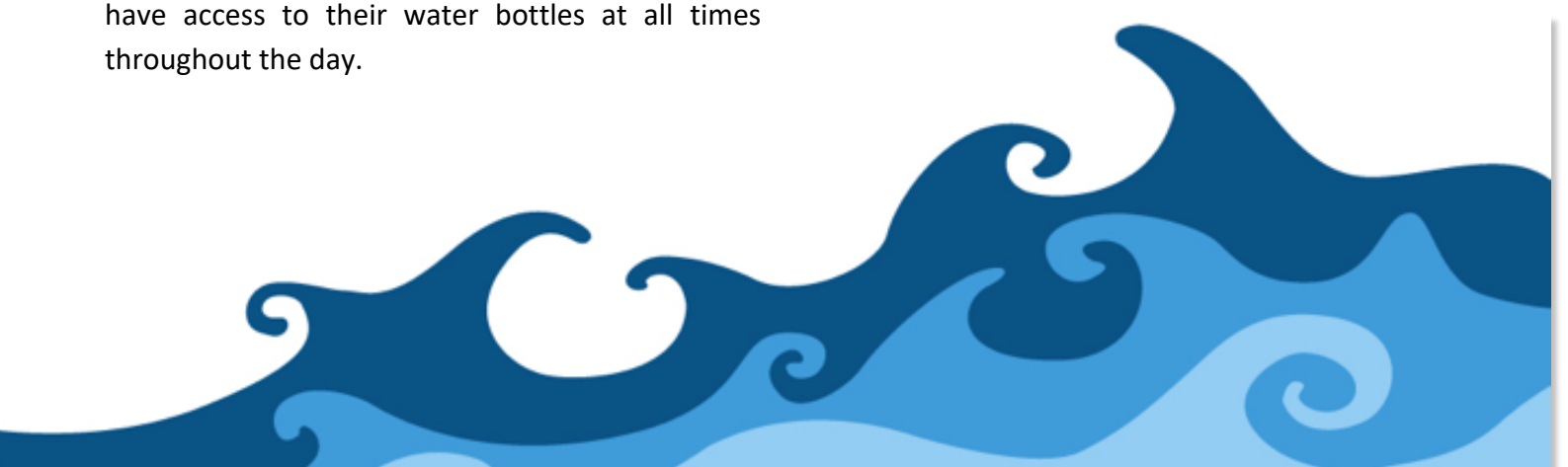
All Kindy students are included in the whole school recess time from 10:50 – 11:10. Please make sure a healthy recess is packed along with their fruit for the day. More information about healthy ideas to pack for your child can be found in the link on the previous page.

## LUNCH

Our Kindy students do not access the school's canteen service and each child is required to bring his or her lunch to school. Please send their lunch in a labelled lunch box and it will remain in their bags until lunchtime.

## STUDENT ATTENDANCE

Beaumaris Primary School prides itself on the high quality, high care early childhood programs on offer. **Every day** your child is at Kindergarten they are provided with a multitude of rich educational experiences that provide the foundation for success in learning and life. We encourage parents to make every effort to ensure your child attends Kindergarten each day so that good attendance patterns are established.



## MORNING ROUTINE

The door to your child's classroom will open at 8.15 am. Between 8.15 and 8.30 am indoor learning experiences will be planned for and we value and encourage your support with these activities. We totally understand if you are not able to support your child during this time and will accommodate this. Children are dismissed at 2.40 pm and please be aware that some children can become distressed if their parents are late so if for some unexpected reason you are delayed in collecting your child, please telephone the school on **6206 3100** and the office will notify your child's teacher. Children need to be accompanied to the door by a parent or a nominated adult and collected at the end of the session. If someone other than yourself is picking up your child, please notify your child's teacher and you will be provided with the appropriate dismissal form.

## PARENT ROSTER

A child's first year of school is extremely exciting and it is our goal to ensure your child has a very positive experience. A child's view of his/her education is greatly influenced by his/her parents. Parents are welcome to spend time in the classroom and each classroom has a parent roster, which is displayed on the notice board beginning **Term 2**. You will assist staff in planned activities and be able to see your child interact in the Kindergarten environment.

## LAUNDRY ROSTER

This may involve the washing of children's aprons, tea towel, hand towels and dress up clothes. A roster will be set up and you will be notified of when you will be required to do this.



## FAMILY LIFE

Family life has a great influence on children. The relationship we develop with parents is highly valued by all staff. If there is any change in routine or an event that we would benefit from being aware of please notify us. A child's emotional wellbeing is paramount to us and we will accommodate adjustments if needed from the information you share with us. If you do need to organise an impromptu meeting, staff are in attendance before the commencement of the day so please bring it to their attention that you need to discuss an issue/information.

## PLAYGROUP WA

If you are thinking of sending your children to playgroup, we currently host Beaumaris Playgroup WA and highly recommend contacting them to enroll your child. They work closely with Beaumaris Primary School and it is a great way to introduce your child to early childhood education before kindergarten. Please email Playgroup WA at [beaumarisplaygroup@gmail.com](mailto:beaumarisplaygroup@gmail.com).



## UNIFORM

There is a Kindy shirt that students may wear whilst participating in the program. We encourage self-expression for our students and therefore the Kindy shirt is not compulsory.

The Kindy shirt and faction hat are available for purchase from **Uniform Concepts** in Joondalup (phone 9270 4660). There is also a uniform ordering form in your information pack.

Please be mindful of the fact that students will need to be dressed in clothing that allows for ease of movement i.e climbing. Please label your child's clothing and hat.

## PERSONAL BELONGINGS

It is important in a child's development for them to become responsible for their own belongings. This will be encouraged and explicitly taught to your child whilst at school. To support this we ask you to encourage independence by teaching your child to remove and put on footwear themselves, and carry their own bag. We are a Sun Smart school and promote safety outdoors through a "No Hat, No Sun" rule across the school for all students.

## SCHOOL NURSE

We have a school nurse who will screen the Kindergarten children for visual and auditory issues during the year. Early in Term 1 a medical form will be sent home to be completed. It is important that this form is returned promptly so we are able to submit these to the school nurse as quickly as possible.



## BAREFOOT PLAY

At Beaumaris all Kindy children take off their shoes when arriving to class. Walking barefoot develops a sense of body awareness. It also develops a natural healthy gait and provides a direct connection to our natural environment.

## EMERGENCIES

It is important that the school is aware of any medical conditions that your child may have and any specific action or treatment that needs to be addressed under emergency conditions. If any details change after enrolment please ensure that you notify the office. It is important the office is aware of up to date contact phone numbers and emergency numbers.

## LIBRARY

On their Wednesday students will visit the school library allowing children to borrow a book. Children require a library bag to carry and protect books borrowed. These bags are available from the school uniform shop in Joondalup. Their library bag needs to be waterproof. Children need to return their books to be able to take a new book home.





*Learn together,  
Grow together,  
Achieve together*



## **Beaumaris Primary School**

*Beaumaris Boulevard*

*Ocean Reef*

*Western Australia*

*6027*

**Phone:** (08) 62063100

**Website:** <http://www.beaumaris.wa.edu.au/>

**e-mail:** [Beaumaris.ps@education.wa.edu.au](mailto:Beaumaris.ps@education.wa.edu.au)

